

12-pin
insulation insert uncoded
housing code 1
flange mount / Flange 25x25

Technical Data

number of pins 12
temperature range -20 °C to 130 °C
protection type when connected IP 66/67

Electrical Data

rated current max. 7 A*
rated voltage 160 V (AC/DC)
rated insulation voltage (L-L) 2500 V

mating cycles 500

Data according to VDE 0110/EN61984, Paragraph 6.19.2.2

pollution degree 3
over voltage category III
max. height for operation 2000 m

Material

housing zinc diecast / nickel plated
insulation insert PBT, UL 94 / V0
seals FKM
contacts brass / gold plated

Contacts

Item: 60.004.11
type Contact Socket 1.0 mm
cross section solder/ 1.50mm²
contact resistance < 5 mOhm

Tools (not part of product contents)

A DF A 021 FS 04 00 0151 A00



Contact Arrangement
mating view



Contact Socket 1.0 mm
solder/ 1.50mm²
Item: 60.004.11



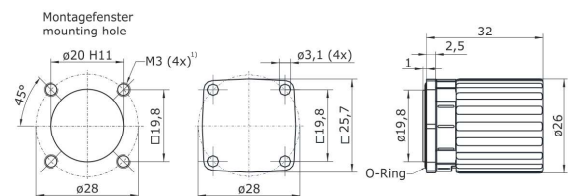
Copyright by Electro-Matic Integrated, INC.
All rights, including rights created by patent grant or registration of a utility model or design, are reserved.
Noncompliance will result in seeking damages.

This document is for information only and before utilization the user must reconfirm actuality.
Subject to technical changes.

Electro-Matic Integrated, INC.
23410 Industrial Park Court
48335 Farmington Hills, MI
USA

E-Mail: ConnectivityEng@electro-matic.com
Web: www.emintegrated.com

issue: 19.07.2020



¹⁾ Bei Bohrung M3 Sonderschraube mit dünnem Kopfdurchmesser verwenden, siehe Zubehör! Alternativ auch Gewinde M2,5 möglich

¹⁾ for M3 bore use special screw with thin head diameter, see accessories! possible also with thread M2.5

Main Dimensions
Bulkhead connector

*for max. wire cross-section pay attention to the cross-section of used contacts